



# Gaumard®

Simulators for Health Care Education

## CODE BLUE® III SIMULATORS

ALS and Emergency Care Simulators

Our Code Blue III system teaches ALS skills using realistic code scenarios. Each step you take is monitored by software providing important feedback, not only on your choice of treatment, but also the amount of time you have taken to perform each vital function.

Our Code Blue® III ALS training simulators allow you to teach high-performance, quality CPR by providing you with real-time feedback on the CPR elements that make a difference.



## CODE BLUE® III ADULT

**S300.100**

Laptop Included



## CODE BLUE® III FIVE YEAR

**S300.105**

Laptop Included



## CODE BLUE® III NEWBORN

**S300.110**

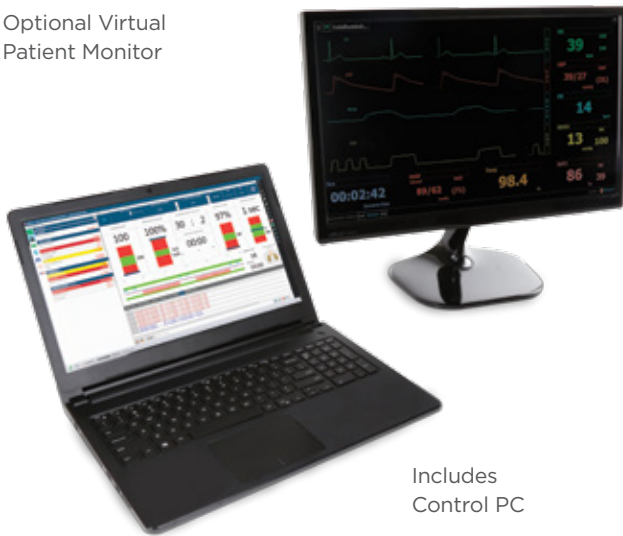
Laptop Included



# CODE BLUE® III FAMILY | ALS and Emergency Care Simulators

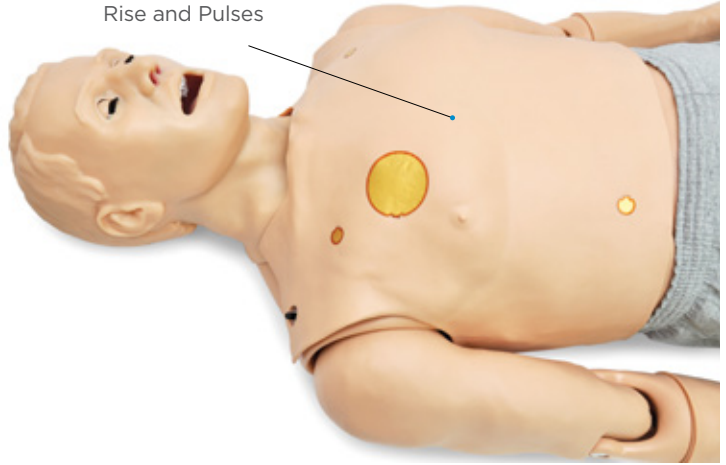
## Code Blue® III S300.100 Resuscitation and Emergency Care Adult Simulator

Optional Virtual Patient Monitor



Includes Control PC

Built-in Compressor Allows for the Continuous Operation of Chest Rise and Pulses



### CPR QUALITY AND PERFORMANCE FEEDBACK

- Time to CPR
- Compression Depth/Rate
- Chest Recoil
- Compression Interruptions
- Ventilation Rate
- Excessive Ventilation
- Time to Defibrillation



The wireless tablet option is ideal for training CPR with visual and audio feedback:



Realistic airway with tongue, visible vocal cords, trachea, and esophagus supports oral and nasal intubation



Color and vital signs respond to hypoxic events and interventions



Connect real electrodes to the conductive skin sites and monitor ECG using real medical equipment

# CODE BLUE® III FAMILY | ALS and Emergency Care Simulators

## CODE BLUE® III ADULT

**S300.100**

Patented; other patents pending

- Realistic airway with tongue, visible vocal cords, trachea and esophagus
- Supports oral and nasal intubation using an endotracheal tube, Laryngeal Mask Airway, Combitube, and more (NP/OP/ET/LMA/LT)
- Head-tilt chin-lift and jaw-thrust
- Supports bag valve mask ventilation
- Sensors detect and log endotracheal tube placement in the airway
- Visible gastric distention with esophageal intubation or excessive ventilation
- Variable cyanosis intensities simulate hypoxic events and effective interventions
- Audible vocal responses and sounds include: complaints, replies, gagging, cough, gasping, and more

- Automatic breathing with variable respiratory patterns include agonal breathing and gasping
- Built-in compressor allows for the continuous operation of chest rise and pulses
- Bilateral lung expansion with realistic chest rise during assisted ventilation
- Unilateral chest rise with right mainstem intubation
- Bilateral lung sounds include wheezing, crackles and squeaks
- Ventilations and chest compressions are measured and logged in real time
- Intravenous access on the right arm
- Intraosseous access at right tibia
- Conductive skin regions allow for ECG monitoring using real equipment
- Cardiac rhythms are synchronized with ECG, selectable heart sounds, and palpable pulses
- Defibrillate, pace, and cardiovert using real energy and devices
- Palpable carotid, brachial, radial and femoral pulses

- BP auscultation in left arm
- Auscultate Korotkoff sounds between systolic/diastolic pressures
- Detects oximeter sensor placement on the left index finger
- Genuine Windows® 15in laptop
- UNI™ Unified Simulator Control Software
- Wired USB communication module

## VIRTUAL MONITOR

**S300.100.001**

- Extended monitor displays patient vital signs in real time including HR, ABP, RR, CO2, SpO2, ETCO2, temperature, NIBP, and more
- Generate and display lab results for the providers to use
- Interactive interface features vital sign parameter alarms, customizable layouts, and file sharing

## TETHERLESS CODE BLUE III OPTIONS

Our Code Blue III simulators are now available with our industry-leading tetherless technology. The Wireless Control option allows for true care-in-motion scenarios, and the wireless tablet is ideal for providing visual and audio feedback to CPR trainees.



## WIRELESS CONTROL

- Train team hand-offs and care-in-motion
- Proven RF wireless connectivity provides reliable near-field communication for tetherless operability
- Includes internal battery and charger

**S300.100.232**

## LIGHTWEIGHT TOUCH TABLET

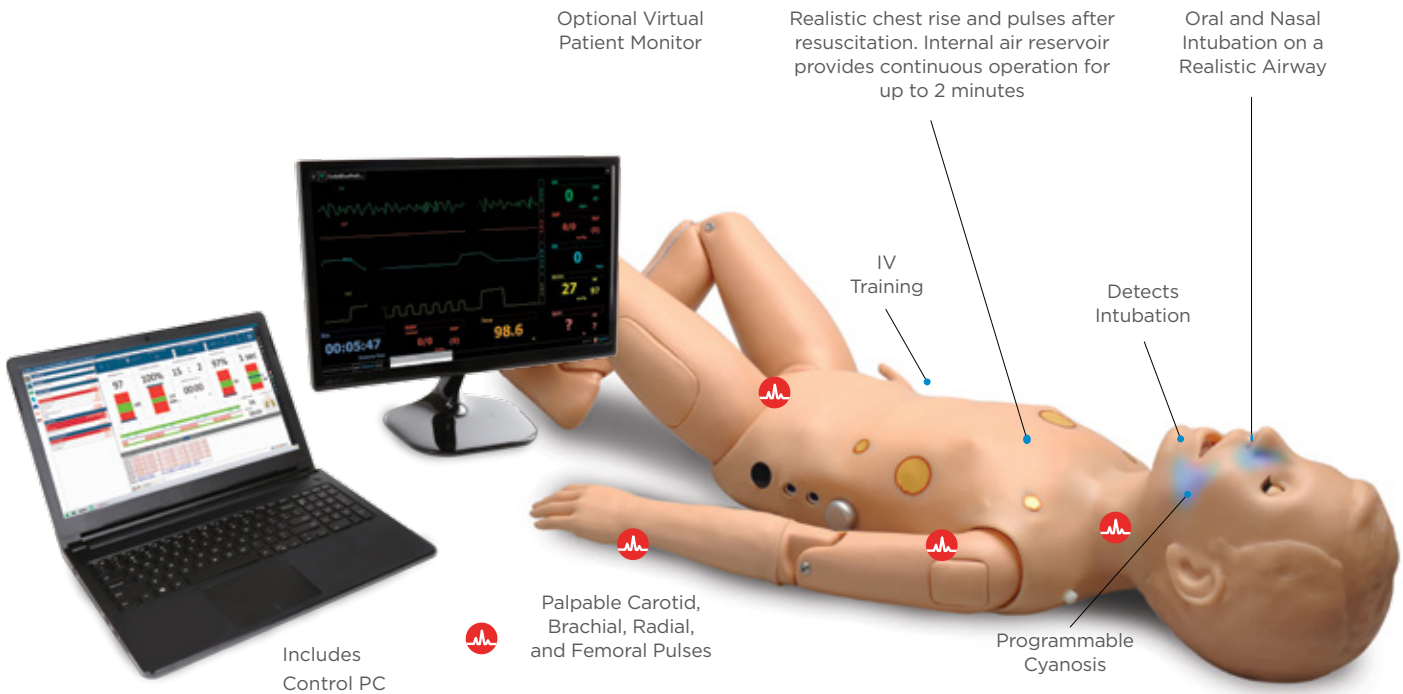
- Upgrade the control PC to the lightweight wireless tablet
- Pen and touch enabled UNI™ simulator control software
- Store your learning material, presentations, and evaluation in one device

- Windows® operating system supports standard Windows® applications, documents, and USB peripherals

**S300.100.215**

# CODE BLUE® III FAMILY | ALS and Emergency Care Simulators

## Code Blue® III S300.105 Resuscitation and Emergency Care 5-year Pediatric Simulator



### CPR QUALITY AND PERFORMANCE FEEDBACK

- Time to CPR
- Compression Depth/Rate
- Chest Recoil
- Compression Interruptions
- Ventilation Rate
- Excessive Ventilation
- Time to Defibrillation



The wireless tablet option is ideal for training CPR with visual and audio feedback:



Connect real electrodes to the conductive skin sites and monitor ECG using real medical equipment



Conductive skin sites permit defibrillation, cardioversion, and pacing using real medical equipment



Color and vital signs respond to hypoxic events and interventions (central cyanosis)

## CODE BLUE® III FIVE YEAR

### S300.105

Patented; other patents pending

- Vocal responses and sounds include complaints, replies, gagging, cough, gasping, and more
- Realistic airway with tongue, visible vocal cords, trachea, and esophagus
- Supports oral and nasal intubation using an endotracheal tube, and other standard medical devices
- Sensors detect depth of intubation
- Unilateral chest rise with right main stem intubation
- (CPR) Chest compression and ventilation performance sensors
- Realistic chest cavity and recoil
- Chest compressions generate palpable pulses
- Bilateral lung expansion and realistic chest rise during bag valve mask (BVM) ventilation
- Visible gastric distension with excessive bagging with esophageal intubation
- Realistic chest rise and pulses after resuscitation. Internal air reservoir provides continuous operation for up to 2 minutes
- Defibrillate, cardiovert, and pace using real devices and adjuncts
- Connect real electrodes to the conductive skin sites and monitor ECG using real medical equipment
- Palpable carotid, brachial, radial, and femoral pulses
- Auscultate heart and lung sounds
- Programmable central cyanosis simulates hypoxic events and effective interventions
- Measurable blood pressure with audible Korotkoff sounds
- Oximeter sensor placement detection on the left index finger
- Intraosseous access at right tibia
- IV access for medication infusion
- Intramuscular injection sites in deltoids and quadriceps for placement exercises
- Built-in rechargeable battery
- 15in control laptop with Windows® operating system
- Supports Windows® applications, documents, and USB peripherals
- Includes USB communications module and cable

## VIRTUAL MONITOR

### S300.105.001

- Extended monitor displays patient vital signs in real time including HR, ABP, RR, CO2, SpO2, ETCO2, temperature, NIBP, and more
- Generate and display lab results for the providers to use
- Interactive interface features vital sign parameter alarms, customizable layouts, and file sharing

## TETHERLESS CODE BLUE III OPTIONS

Our Code Blue III simulators are now available with our industry-leading tetherless technology. The wireless Control option allows for true care-in-motion scenarios.

## WIRELESS CONTROL

### S300.105.232

- Control Wirelessly
- Train team hand-offs and care-in-motion
- Proven RF wireless connectivity provides reliable near-field communication for tetherless operability
- Includes internal battery and charger

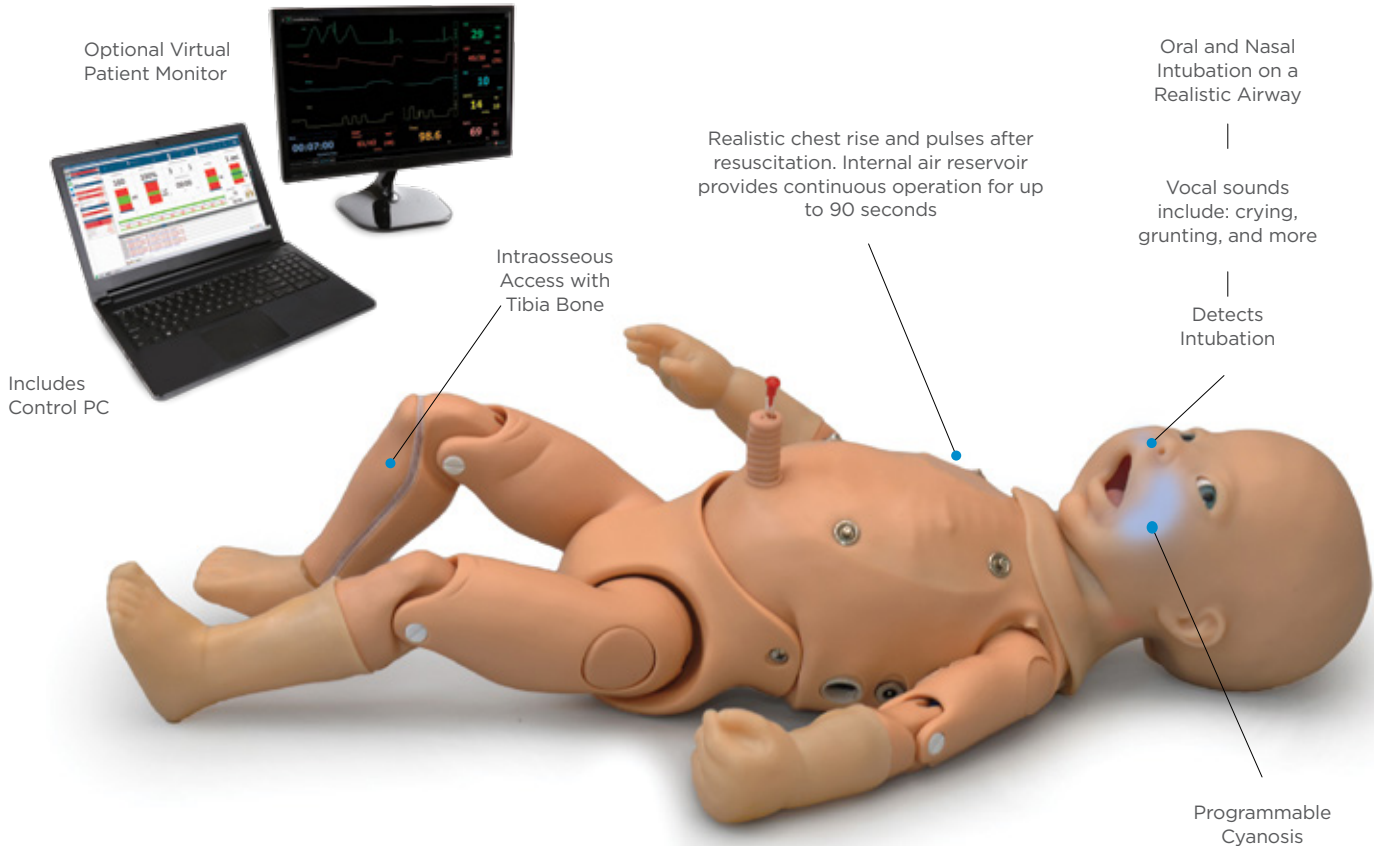
## LIGHTWEIGHT TOUCH TABLET

### S300.105.215

- Upgrade the control PC to the lightweight wireless tablet
- Pen and touch enabled UNI™ simulator control software
- Store your learning material, presentations, and evaluation in one device
- Windows® operating system supports standard Windows® applications, documents, and USB peripherals



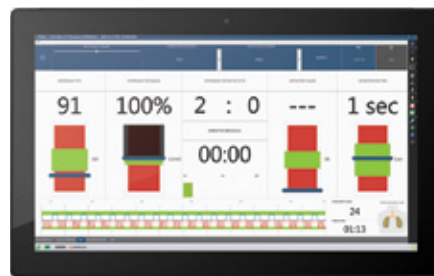
**Code Blue® III S300.110 Resuscitation and Emergency Care Neonatal Simulator**



**CPR QUALITY AND PERFORMANCE FEEDBACK**

- Time to CPR
- Compression Depth/Rate
- Chest Recoil
- Compression Interruptions
- Ventilation Rate
- Excessive Ventilation
- Time to Defibrillation

**PROVIDER FEEDBACK MODE**



The wireless tablet option is ideal for training CPR with visual and audio feedback:



Connect real electrodes to the conductive skin sites and monitor ECG using real medical equipment



Color responds to hypoxic events and interventions (healthy, mild cyanosis, severe cyanosis)



Chest compression and ventilation sensors track and log provider CPR performance



## CODE BLUE® III NEWBORN

### S300.110

Patented; other patents pending

- Programmable crying
- Realistic airway with tongue, visible vocal cords, trachea, and esophagus
- Supports oral and nasal intubation using an endotracheal tube and other standard medical devices
- Sensors detect depth of intubation
- Unilateral chest rise with right main stem intubation
- (CPR) Chest compression and ventilation performance sensors
- Realistic chest cavity and recoil
- Compressions generate palpable pulses
- Bilateral lung expansion and realistic chest rise during bag valve mask (BVM) ventilation
- Realistic chest rise and pulses after resuscitation. Internal air reservoir provides continuous operation for up to 60 seconds
- Connect real electrodes to the conductive skin sites and monitor ECG using real medical equipment
- Palpable umbilical, brachial, and radial pulse
- Auscultate heart and lung sounds
- Programmable central cyanosis simulates hypoxic events and effective interventions
- Measurable blood pressure
- Intraosseous access at right tibia
- Umbilical catheterization
- IV access for medication infusion

### CONTROL PC INCLUDED

- Windows® control laptop
- Supports standard Windows® applications, documents, and USB peripherals
- Includes USB communications module and cable

## VIRTUAL MONITOR

### S300.110.001

- Extended monitor displays patient vital signs in real time including HR, ABP, RR, CO2, SpO2, ET/CO2, temperature, NIBP, and more
- Generate and display lab results for the providers to use
- Interactive interface features vital sign parameter alarms, customizable layouts, and file sharing

### TETHERLESS CODE BLUE III OPTIONS

Our Code Blue III simulators are now available with our industry-leading tetherless technology. The wireless Control option allows for true care-in-motion scenarios.



## WIRELESS CONTROL

### S300.110.232

- Control Wirelessly
- Train team hand-offs and care-in-motion
- Proven RF wireless connectivity provides reliable near-field communication for tetherless operability
- Includes internal battery and charger

## LIGHTWEIGHT TOUCH TABLET

### S300.110.215

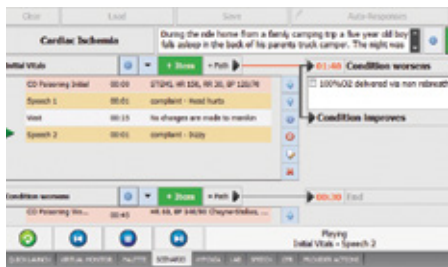
- Upgrade the control PC to the lightweight wireless tablet
- Pen and touch enabled UNI™ simulator control software
- Store your learning material, presentations, and evaluation in one device
- Windows® operating system supports standard Windows® applications, documents, and USB peripherals



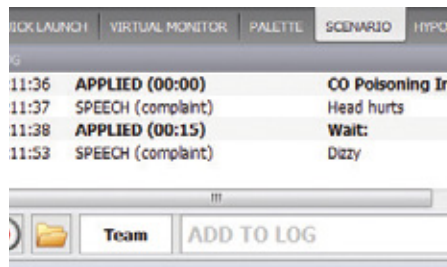
# CODE BLUE® III FAMILY | ALS and Emergency Care Simulators

## The Code Blue III family is ready for simulation with the UNI™ Unified Simulator Control Software:

- Includes a library of preprogrammed scenarios
- Easy to use on-the-fly controls, and scenario builder
- Real time CPR quality and performance information
- Lab report generator
- Track care provider actions
- Generate event logs and performance reports for debriefing and archiving



Link "Palette" items to build a linear or branching scenario



Changes in condition and care are time stamped and logged



Hypoxic model responds to care provider actions

UNI™ features easy to use controls, logging tools, and a built-in patient vital signs monitor view.

# CODE BLUE® III FAMILY | ALS and Emergency Care Simulators

## FEATURE COMPARISON

	S300.100	S300.105	S300.110
Airway sounds and vocal responses	●	●	●
Supports bag valve mask ventilation	●	●	●
Visible vocal cords	●	●	●
Head tilt-chin lift and jaw thrust	●	●	●
Oral/Nasal intubation (ET)	●	●	●
Intubation depth detection	●	●	●
Preprogrammed speech responses	●	●	-
Bilateral lung expansion with bag valve ventilation	●	●	●
Unilateral chest rise with right main stem intubation	●	●	●
Bilateral lung sounds	●	●	●
Programmable chest rise and fall	●	●	●
Built-in air compressor for continuous breathing	●	-	-
Spontaneous breathing and pulses with air reservoir	-	●	●
Intraosseous access at right tibia	●	●	●
IV training arm	●	●	●
Umbilical catheterization	-	-	●
Oximeter sensor placement detection	●	●	-
Multiple palpable pulses	●	●	●
Palpable umbilical pulse	-	-	●
Blood pressure auscultation	●	●	●
Korotkoff sounds	●	●	●
Visible cyanosis	●	●	●
(CPR) chest compression and ventilation performance sensors	●	●	●
Chest compressions generate palpable pulses	●	●	●
Defibrillate and pace using real medical devices	●	●	-
Heart and lung sounds	●	●	●
4 Lead ECG using real medical equipment	●	●	●
Palpable landmarks including ribs and xiphoid process	●	●	●
Articulated neck, jaw, arms, and legs	●	●	●
Oral suctioning	●	●	-
Gastric distension with excessive BVM	●	●	-
Wired communication	●	●	●
Built-in rechargeable battery	●	●	●
Defibrillate to snap sites	●	●	-
UNI™ unified simulator control software	●	●	●
15in simulator control laptop (included)	●	●	●
Vital Signs Monitor / 19in virtual patient vital signs monitor	○	○	○
A/C Virtual Monitor	○	○	○

● Standard ○ Optional Add-On/Accessory

Skin tones available at no extra charge

● Light ● Medium ● Dark

\* Price when ordered with simulator

REQUEST A QUOTE

14700 SW 136th Street  
Miami, Florida 33196-5691

P.O. Box 140098  
Coral Gables, Florida 33114-0098

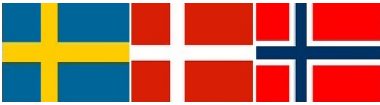
Toll Free USA  
Call 8:00 a.m.- 7:30 p.m. ET  
Monday - Friday  
800.882.6655

Worldwide  
305.971.3790

Fax  
305.252.0755  
Twenty-four hours

Web Site  
www.gaumard.com

Distributor:



GM MEDICAL  
Product Specialist Brian Vester  
+4531552280  
BV@gm-medical.com

**ABOUT GAUMARD®**

We are your direct source for health care education needs. Gaumard® is family owned and operated.

**PLACE YOUR ORDER**

By telephone, fax, or on-line at  
www.gaumard.com

**WE ACCEPT**

VISA, MasterCard, American Express

**WARRANTY**

Gaumard products are covered by a one-year limited warranty. Terms and conditions apply. Please visit www.gaumard.com for details.

**EXTENDED WARRANTY & TRAINING**

Extended warranty plans and training are available.

**TECHNICAL SUPPORT**

Available 8:00 a.m. to 7:30 p.m. ET weekdays, or email us at support@gaumard.com  
Phone: 786-478-3838

**ON-LINE SUPPORT 24/7**

Download articles, instructions, teaching tips. View instructional videos on demand.

**REPAIR**

Gaumard® offers repair services and parts. For more information visit www.gaumard.com

**GAUMARD® LISTENS**

Customers are a terrific source for ideas! If you need something special, give us a call or email us at sales@gaumard.com



**Gaumard®**  
Simulators for Health Care Education

© 2016 Gaumard Scientific. All rights reserved.  
Patented; other patents pending.

MADE IN THE U.S.A.