



ACCUVAC Lite

Simply Strong – Suction Made Easy



ACCUVAC Lite

Simply Strong – Suction Made Easy

In an emergency situation, the patient's survival depends on fast and effective airway clearance. ACCUVAC has been the standard for airway suction for several decades, ensuring free airways with suctioning of the patient's mouth and throat or endotracheal or bronchial suction. High suction capacity and simple operation guarantee fast and effective treatment in an emergency or in the hospital.

Your advantages at a glance

- Variable use
- Safe and hygienic
- Intuitive operation, robust
- EN 1789-compliant, safe accommodation in wall mounting in vehicle

Wide range of uses, flexible operation

The negative pressure range of ACCUVAC Lite can be infinitely set and adjusted with the easy-to-use vacuum regulator. The range of settings allows the pump's use for babies, children and adults. In addition to suctioning airways, ACCUVAC Pro also deflates vacuum splints and mattresses.



ACCUVAC Lite with reusable canister system, wall mounting, accessories bag and 12-V connection cable, WM 11720



ACCUVAC Lite with disposable canister system, wall mounting and 12-V connection cable, WM 11715 and protective bag, WM 11692



Convenient operation, broad area of application

- High-capacity suction of about 26 liters/minute at -0.8 bar (at device inlet).
- Infinitely adjustable vacuum setting to -0.8 bar with easy-to-use vacuum regulator
- Negative pressure can be read from manometer
- Safe suction of secretions by means of auto-clavable reusable secretions canister with bacteria filter and overflow protection or disposable Serres® suction bag with integrated bacteria filter
- Battery change: user can make the simple change from outside device, without tools
- Robust housing of impact-resistant materials
- Low center of gravity prevents device from tipping

Ideal operability in everyday emergency medical services

- Ideal storage of suction tube in side-mounted tube holder
- Single-handed release from wall mounting with the push of a button
- Compatible with existing ACCUVAC wall mounting
- Optionally available with large accessories bag, protective bag and/or shoulder strap

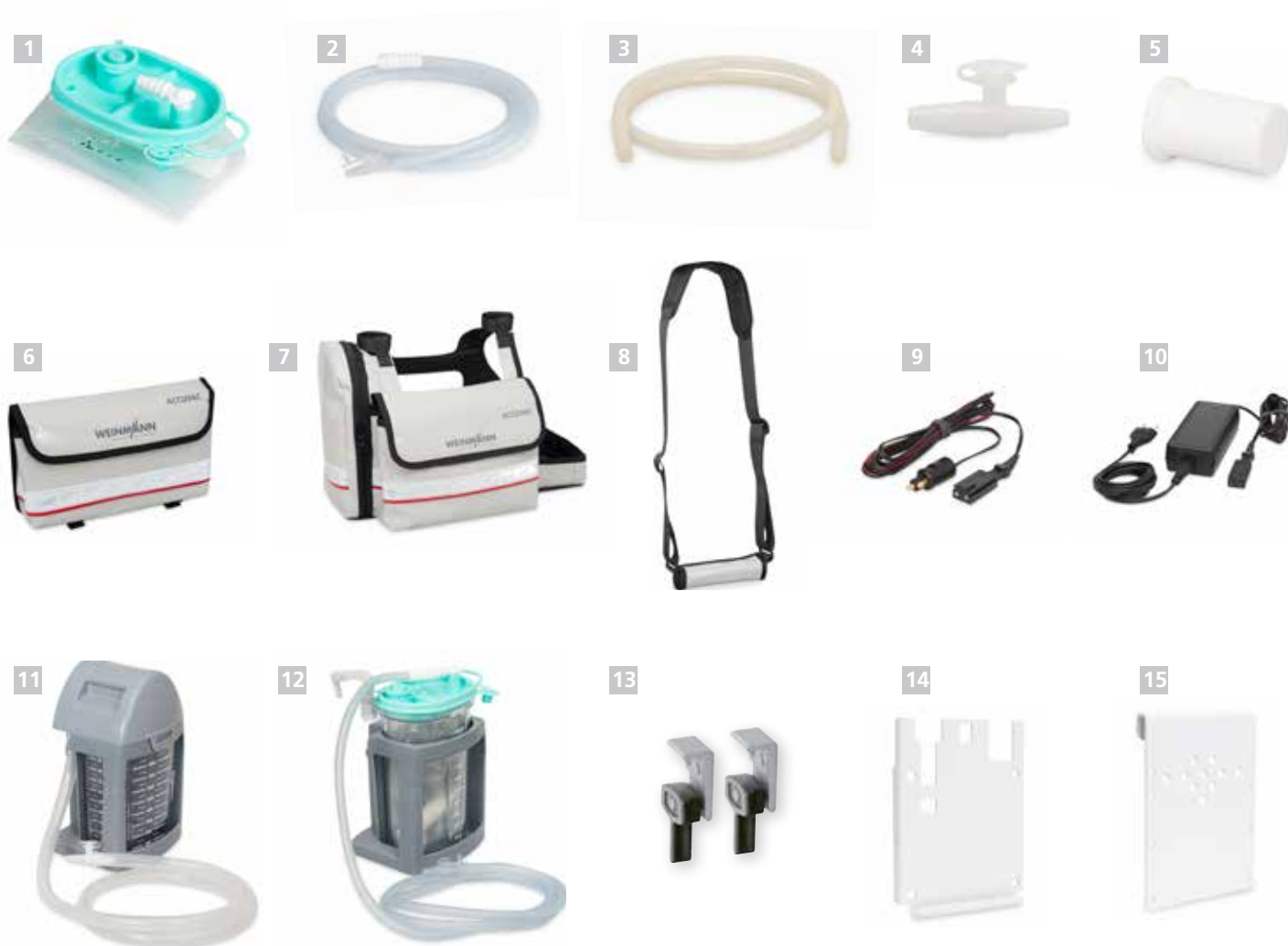


For every type of patient and every emergency response

- Suctioning of secretions and food particles
- Endotracheal and bronchial suction
- Suitable for use on babies, children and adults
- Deflating of vacuum splints and mattresses

Secretion Suction Device

Device description	WM-Nr.
ACCUVAC Lite with reusable canister system	11700
ACCUVAC Lite with reusable canister system, wall mounting and 12-V connection cable	11710
ACCUVAC Lite with reusable canister system, wall mounting, accessories bag and 12-V connection cable	11720
ACCUVAC Lite with reusable canister system and accessories bag	11740
ACCUVAC Lite with disposable canister system	11705
ACCUVAC Lite with disposable canister system, wall mounting and 12-V connection cable	11715
ACCUVAC Lite with disposable canister system, wall mounting, accessories bag and 12-V connection cable	11725
ACCUVAC Lite with disposable canister system and accessories bag	11745



Consumables

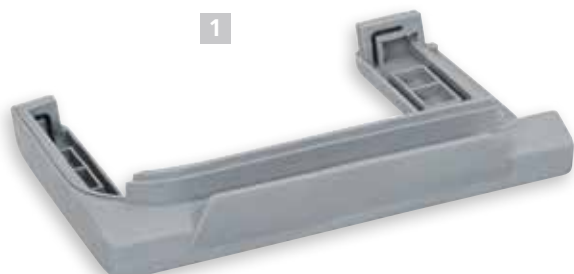
1 Serres® suction bag 1000 ml, with hydrophobic filter and solidifying agent (packaging unit: 32 items in carton)	WM 17800	3 Reusable suction tube 130 cm long, 10 mm ID, also available in sets of 10, 20 and 50 tubes	WM 10662
2 Disposable suction tube with fingertip control for use with disposable system, 180 cm long, 7 mm ID, also available in sets of 10, 20, 32 and 50 tubes	WM 10778	4 Fingertip control for reusable suction tube 10 mm ID also available in sets of 10, 20 and 50 tubes	WM 10666
		5 Set of 10 bacteria filters for reusable secretions canister	WM 17830

ACCUVAC Lite Accessories

6 Accessories bag Battery compartment cover for accessories bag is required (WM 11714)	WM 11691	12 Conversion set for disposable canister system consisting of: ■ Holder for disposable canister system (WM 11754) ■ Vacuum tube for Serres® secretions canister (WM 11761) ■ Serres® secretions canister, complete (WM 10790)	WM 17825
7 Protective bag	WM 11692	13 Conversion set for accessories bag consisting of: ■ Battery compartment cover for accessories bag (WM 11714) ■ Accessories (WM 11691)	WM 17839
8 Shoulder strap	WM 11693	14 Attachment set with two adapters for standard hospital rails also required for installation on device rails	WM 15805
9 12-V connection cable	WM 10650	15 Wall mounting for ACCUVAC including installation set	WM 15208
10 Mains/charger unit for 100V to 240V alternating current to ACCUVAC device plug, including power cable in compliance with EN 50075 (Europlug)	WM 2620	15 Holding plate for standard hospital rail also required for suspension from hospital rail	WM 15845
11 Conversion set for reusable canister system consisting of: ■ Set, reusable canister system for ACCUVAC Pro and Lite (WM 17821) ■ Holder for reusable canister system (WM 11654)	WM 17820		

Replacement parts for ACCUVAC Lite

- Set, catch release WM 17837
- Lead rechargeable battery pack WM 10747
- Battery compartment cover (without eyelets for accessories bag) WM 11704
- Holder for suction tube WM 11664
- 1 Device base WM 11677



Replacement parts for reusable system

- 1 Upper part of secretions canister cover, WM 11657 1
- 2 Filter holder, WM 11661 2
- 3 O-Ring for filter holder, WM 11663 3
- 4 Bacteria filter, WM 11659 4
- 5 Lower part of secretions canister cover, WM 11658 5
- 6 Ball float valve, WM 11662 6
- 7 Reusable secretions canister 1000 ml, WM 11653 7
- 8 Reusable suction tube 10 mm ID, WM 10662 8
- 9 Fingertip control for reusable-suction hose 10 mm ID, WM 10666 9
- 10 Holder for reusable canister system, WM 11654 10
- Secretions holder cover, complete, consisting of replacement parts 1 – 6, WM 17822
- Reusable canister system, consisting of replacement parts 1 – 9, WM 17821
- Reusable canister system conversion set, consisting of replacement parts 1 – 10, WM 17820

ACCUVAC Pro Service Data Summarized



Manufacturer's warranty	2 years
Safety check intervals	safety check not required
Maintenance schedule	no maintenance required
Function check	manual
Time required for function check	maximum 20 seconds
Battery change	simple, from outside device, without tools
Battery	no maintenance, no calibration required
Deep discharge protection for battery	✗
Protection from electrical surge and reverse polarity	✗
Conversion of disposable system / reusable system	simple, without tools
Software update can be made by	operator/user
Remote diagnosis for device malfunction	✗



Manufacturer's service number
+49 40 88 18 96-122

Replacement parts for Serres® disposable system

- Serres® secretions canister complete WM 10790
 consisting of:
 - Secretions canister, 1000 ml (WM 10775)
 - Suction bag
 - Disposable suction tube with fingertip control (WM 10778)
- Serres® secretions canister, 1000 ml WM 10775
- Vacuum tube for Serres® secretions canister WM 11761
- Holder for disposable canister system WM 11754
- Set disposable canister system WM 17826
 consisting of:
 - Vacuum tube for Serres® secretions canister (WM 11761)
 - Serres® secretions canister, complete (WM 10790)
- Angled connector for Serres® canister, reusable WM 10799

ACCUVAC Lite Technical Data



Product class as per Directive 93/42/EEC	Ila
RoHS-conformity as per Directive 2011/65/EU (RoHS II)	Yes
Classification as per EN ISO 10079-1	High vacuum/high flow
Standards used	EN 60601-1, EN ISO 10079-1, EN 1789, EN 60601-1-12, EN 60601-1-11
Dimensions (W x H x D): ■ with reusable canister system ■ with disposable canister system	370 x 277 x 146 mm 370 x 277 x 146 mm
Weight: ■ Device with rechargeable battery/without canister system and holder ■ Reusable canister system with holder for reusable canister system ■ Disposable canister system with holder for disposable canister system	4.6 kg 1.0 kg 0.65 kg
Temperature range ■ Operation: ■ Transport/Storage:	-5 °C to +50 °C -40 °C to +70 °C
Maximum current consumption	3.7 A
Rated voltage	12 V DC nominal (min. 10 V, max. 15 V)
Suction capacity at device inlet (without canister system) at -0.8 bar, fully charged battery and 21 °C/1013 hPa	26 l/min
Suction capacity at inlet of reusable canister system at -0.8 bar, fully charged battery and 21 °C/1013 hPa	23 l/min
Vacuum setting	Over infinitely variable vacuum regulator
Type of operation	S2 45 min
Degree of protection	IP34D
Type of rechargeable battery	Lead
Rechargeable battery ■ Charging time ■ Service life ■ Battery runtime	Battery status 80 %: 2.75 hrs Battery status 100%: 14 hrs About 400 charging cycles > 30 min (uninterrupted operation with fully charged/new battery)
Secretions canister volume	1000 ml
Reusable suction tube	10 mm ID, 1300 mm long
Disposable suction tube	7 mm ID, 1800 mm long

83150-EN-07/2015 © Copyright WEINMANN Emergency, Hamburg. Duplication of any kind only with the express permission of WEINMANN Emergency. All rights to technical and design modifications are reserved.

Simply Professional

WEINMANN Emergency is a family-owned, internationally active medical technology company. With our mobile system solutions for emergency, transport and disaster medicine, we set standards for saving human lives.

In close collaboration with professional users in emergency medical services, hospitals and armies, we develop innovative medical products for ventilation and defibrillation. For more than 100 years we have offered our customers a high degree of reliability, extensive experience and quality made in Germany.



weinmann-emergency.de | weinmann-emergency.fr | weinmann-emergency.ru | weinmann-emergency.cn

**Would you like to know more?
We look forward to your call
T: +49 40 88 18 96-120**

